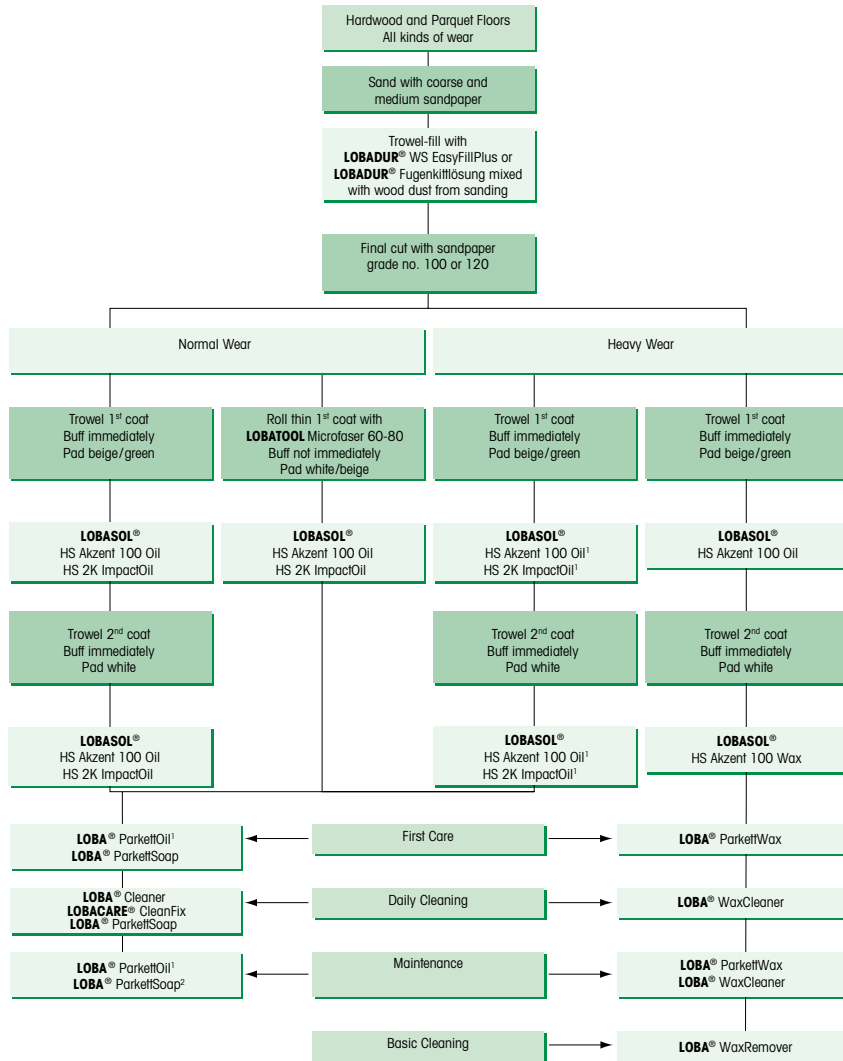


LOBASOL®

High Solid Systems

For information about compatibility of products with certain wood species or applications, please refer to the corresponding Technical Information Bulletin.



¹ Please note page 33 for BGR 181!

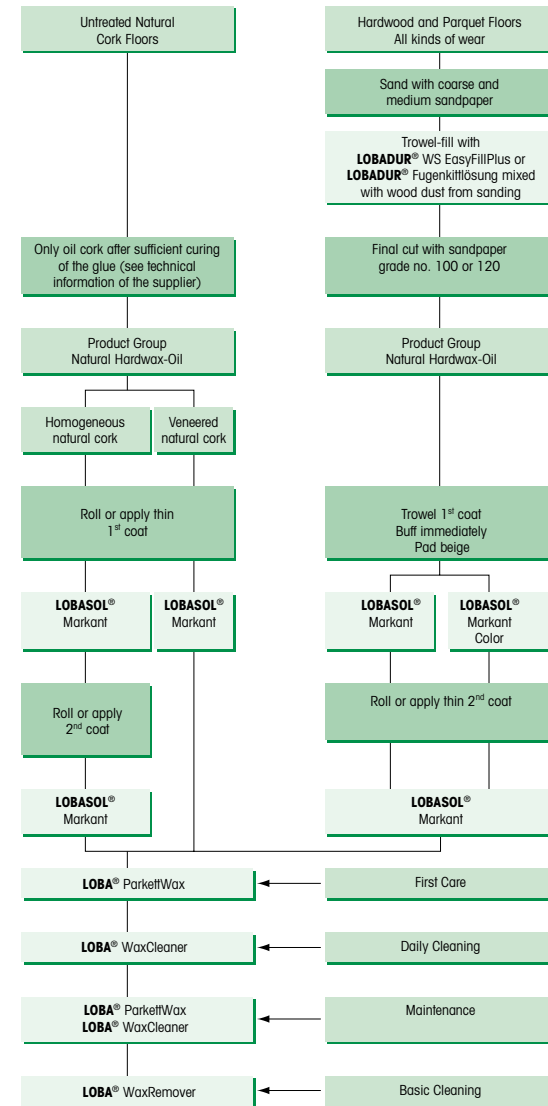
² Intensive Care 1:2 Mixing ratio

The above mentioned oils and oil-/wax systems show no tendency for side-bonding. For care and maintenance, please refer to LOBA manual for oiled hardwood and parquet floors.

LOBASOL®

Oil and Wax Systems

For information about compatibility of products with certain wood species or applications, please refer to the corresponding Technical Information Bulletin.



The above mentioned oils and oil-/wax systems show no tendency for side-bonding. For care and maintenance, please refer to LOBA manual for oiled hardwood and parquet floors.